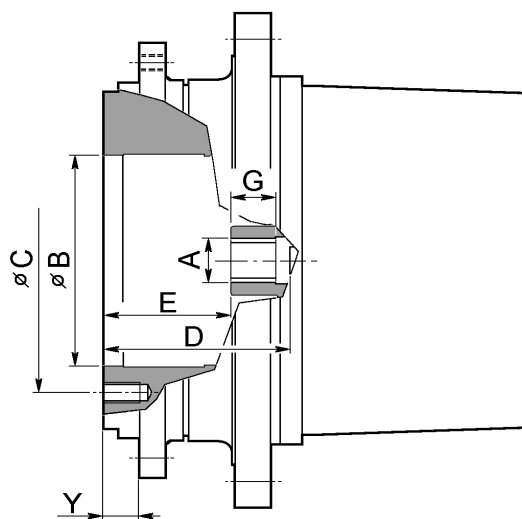




**MOTORI ACCOPPIABILI
COUPLING MOTORS
MOTEURS A ACCOUPLER
MOTORENADAPTER**



Codice Code	Riduttore Gear Réducteur Getriebe	Tipo Type Type Typ	A	B	C	D	E	G	Y
A10	PGR 130	GLC	12/24 Dp 12T.	100 H8	n° 4 M10 - ϕ 125	27	-25	10	21
	PGR 280	GLC	12/24 Dp 12T.	100 H8	n° 4 M10 - ϕ 125	27	-25	14	21
	PGR 402	GLC	12/24 Dp 12T.	100 H8	n° 4 M10 - ϕ 125	27	-25	19	18
	PGR 602	GLC	12/24 Dp 12T.	100 H8	n° 4 M10 - ϕ 125	27	-25	18	15
	PGW 220	GLC	12/24 Dp 12T.	100 H8	n° 4 M10 - ϕ 125	27	-25	—	26
	PGW 402	GLC	12/24 Dp 12T.	100 H8	n° 4 M10 - ϕ 125	27	-25	19	18
	PGW 602	GLC	12/24 Dp 12T.	100 H8	n° 4 M10 - ϕ 125	27	-25	18	15
D10	PGR 130	OMSS	12/24 Dp 12T.	100 H8	n° 4 M10 - ϕ 125	27	-25	10	21
	PGR 280	OMSS	12/24 Dp 12T.	100 H8	n° 4 M10 - ϕ 125	27	-25	14	21
	PGR 402	OMSS	12/24 Dp 12T.	100 H8	n° 4 M10 - ϕ 125	27	-25	19	18
	PGR 602	OMSS	12/24 Dp 12T.	100 H8	n° 4 M10 - ϕ 125	27	-25	18	15
	PGW 220	OMSS	12/24 Dp 12T.	100 H8	n° 4 M10 - ϕ 125	27	-25	—	26
	PGW 402	OMSS	12/24 Dp 12T.	100 H8	n° 4 M10 - ϕ 125	27	-25	19	18
	PGW 602	OMSS	12/24 Dp 12T.	100 H8	n° 4 M10 - ϕ 125	27	-25	18	15
E10	PGR 130	EATON2000	12/24 Dp 12T.	101.6 H8	n° 4 M12 - ϕ 127	42	17	10	21
	PGR 280	EATON2000	12/24 Dp 12T.	101.6 H8	n° 4 M12 - ϕ 127	42	17	14	21
	PGW 220	EATON2000	12/24 Dp 12T.	101.6 H8	n° 4 M12 - ϕ 127	42	17	—	26

**MOTORI ACCOPPIABILI
COUPLING MOTORS
MOTEURS A ACCOUPLER
MOTORENADAPTER**



Codice Code	Riduttore Gear Réducteur Getriebe	Tip Type Type Typ	A	B	C	D	E	G	Y
H10	PGR 402	A2FE28/32	N30x2x14x9H	135(+0.03/+0.07)	n° 2 M12 - ϕ 160	125	93	19	18
	PGR 602	A2FE28/32	N30x2x14x9H	135(+0.03/+0.07)	n° 2 M12 - ϕ 160	125.5	90	18	18
	PGW 402	A2FE28/32	N30x2x14x9H	135(+0.03/+0.07)	n° 2 M12 - ϕ 160	125	93	19	18
	PGW 602	A2FE28/32	N30x2x14x9H	135(+0.03/+0.07)	n° 2 M12 - ϕ 160	125.5	90	20	18
H20	PGR 132	A2FM10	N25x1.25 x18x9H	80 G7	n° 4 M8 - ϕ 100	49	26.5	12	15
H30	PGR 1002	A2FE32	12/24 Dp 14T.	135 (+0.03/+0.07)	n° 2 M12 - ϕ 160	135.5	99	26	20
	PGR 1003	A2FE32	12/24 Dp 14T.	135 (+0.03/+0.07)	n° 2 M12 - ϕ 160	135.5	99	26	20
	PGW 1002	A2FE32	12/24 Dp 14T.	135 (+0.03/+0.07)	n° 2 M12 - ϕ 160	135.5	99	26	20
H40	PGR 1002	A2FE45	N30x2x14x9H	160 (+0.10/+0.05)	n° 2 M16 - ϕ 200	135.5	99	26	24
	PGR 1003	A2FE45	N30x2x14x9H	160 (+0.10/+0.05)	n° 2 M16 - ϕ 200	135.5	99	26	24
	PGW 1002	A2FE45	N30x2x14x9H	160 (+0.10/+0.05)	n° 2 M16 - ϕ 200	135.5	99	26	24
H50	PGR 1002	A6VE55	12/24 Dp 14T.	160 (+0.10/+0.05)	n° 2 M16 - ϕ 200	135.5	99	26	24
	PGR 1003	A6VE55	12/24 Dp 14T.	160 (+0.10/+0.05)	n° 2 M16 - ϕ 200	135.5	99	26	24
	PGW 1002	A6VE55	12/24 Dp 14T.	160 (+0.10/+0.05)	n° 2 M16 - ϕ 200	135.5	99	26	24
H60	PGR 402	A2FM28/32	N30x2x14x9H	100 H8	n° 4 M10 - ϕ 125	65	27	19	19
S10	PGR280	SAE A	12/24 Dp 14T.	82.55 H8	n° 6 M10 - ϕ 106.4	35	10	14	15
S20	PGR 402	SAE B	16/32 Dp 13T.	101.6 H8	n° 2 M12 - ϕ 146 / n° 4 M12 - ϕ 127	58.5	34	19	24
	PGR 602	SAE B	16/32 Dp 13T.	101.6 H8	n° 2 M12 - ϕ 146 / n° 4 M12 - ϕ 127	43	18	20	24
	PGW 402	SAE B	16/32 Dp 13T.	101.6 H8	n° 2 M12 - ϕ 146 / n° 4 M12 - ϕ 127	58.5	34	19	24
	PGW 602	SAE B	16/32 Dp 13T.	101.6 H8	n° 2 M12 - ϕ 146 / n° 4 M12 - ϕ 127	43	18	20	24
V10	PGR 402	F 13/30	N30x2x14x9H	135(+0.03/+0.07)	n° 2 M12 - ϕ 160	125	93	19	18
	PGR 602	F 13/30	N30x2x14x9H	135(+0.03/+0.07)	n° 2 M12 - ϕ 160	125.5	90	18	18
	PGW 402	F 13/30	N30x2x14x9H	135(+0.03/+0.07)	n° 2 M12 - ϕ 160	125	93	19	18
	PGW 602	F 13/30	N30x2x14x9H	135(+0.03/+0.07)	n° 2 M12 - ϕ 160	125.5	90	20	18



TIPOLOGIE PORTE MOTORI MOTOR PORT TYPES ORIFICES MOTEURS MOTORANSCHLUSSTYPEN

Porte motore

Gli schemi seguenti riportano le dimensioni degli attacchi motore indicati sui disegni dimensionali con i riferimenti A-B-C-D-E.

Motor ports

The following drawings show the size of the motor ports marked on the dimensional drawings by the letters A-B-C-D-E.

Orifices moteur

Les schémas ci-dessous montrent les dimensions des accouplements moteurs, indiquées sur les schémas par les lettres A-B-C-D-E.

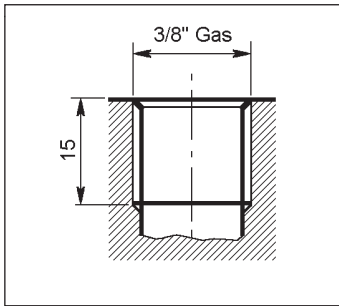
Motoranschlüsse

In den nachstehenden Bildern sind die Größen der in den Maßzeichnungen mit A-B-C-D-E gekennzeichneten Motoranschlüsse angegeben.

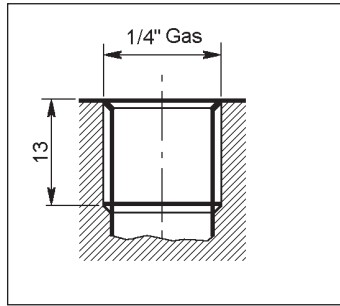
A **B**

**PORTE DI PILOTAGGIO
PILOT PORTS
ORIFICES DE PILOTAGE MOTEUR
STEUERUNGSANSCHLÜSSE**

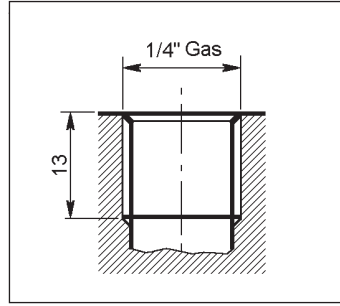
A1 - B1



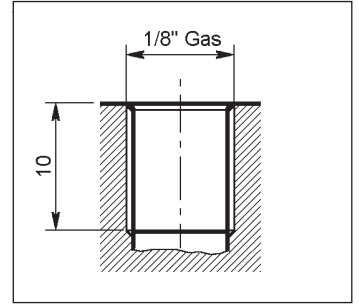
A4 - B4



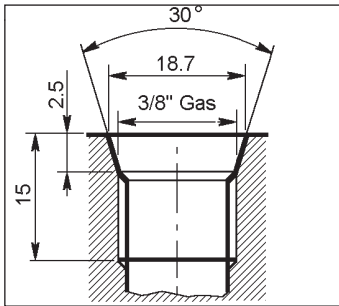
D1



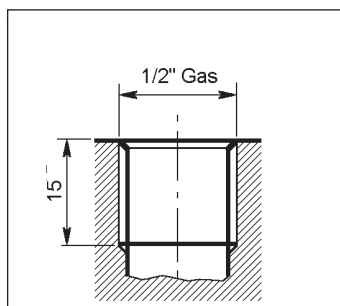
C1



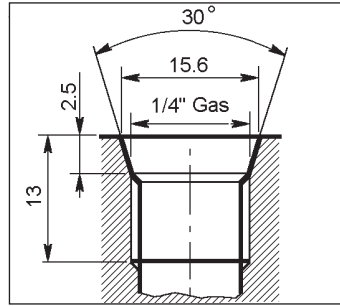
A2 - B2



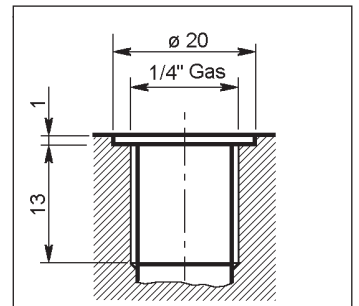
A5 - B5



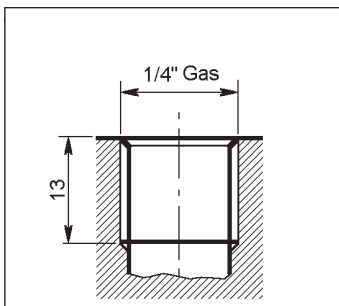
D2



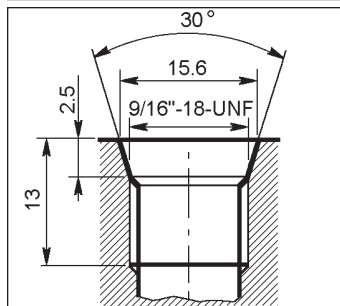
C2



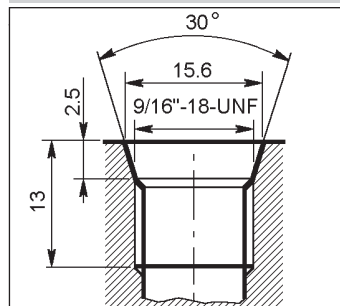
A3 - B3



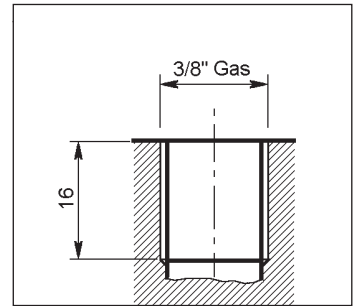
A6 - B6



D3



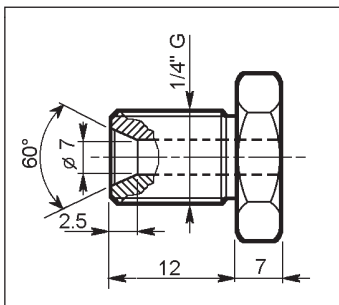
C3



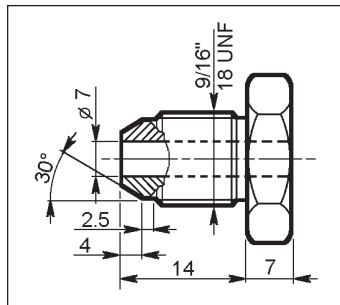
E

**PORTE DI VARIAZIONE CILINDRATA
DISPLACEMENT CHANGE PORTS
ORIFICES DE VARIATION CYLINDREE
KOLBENVERSTELLANSCHLÜSSE**

E1



E2



C4

